

SEA+_or SEAWOOD (SEA+ lite version) Installation

The software is installed completely from the SEA+ CD-ROM or USB dongle with SEA+ installation files and the User's Guide as PDF file, or the software is downloaded from appropriate supplier site (InterAC or your local distributor).

Requirement

- Windows 7 to 10 (32-bit or 64-bit)
- Minimum of 4 GB RAM, SVGA Monitor resolution (1024 x 768)

License Control

- SEA+ is a license-controlled application through node-locked or network licensed versions. The license control mechanism is based on RLM from Reprise Software Inc.
- A license file issued by InterAC controls the SEA+ end-user license.

Installing & Licensing SEA+ Node-Locked License

The node-locked license is fixed to a specific machine's host-ID Number or is fixed to a specific dongle host-ID Number

License File Based on the End-User Computer Host-ID

The license is fixed to a specific machine's host-ID Number. This license grants usage rights to a single user who will operate on a single machine.

- The license file is based on the end-user computer host-ID; this host-ID is generated:
 - through the "rlmhostid.exe" tool enclosed in the SEA+ CD-ROM or USB dongle or downloaded with the software ; "rlmhostid.exe" is started from DOS command window,
 - or this host-ID is obtained by Windows command "ipconfig/all" started from DOS command window.
- The obtained host-ID has to contain 12 digits or letters (as example: AB-11-A1-16-C6-5D) and must be e-mailed (copy screen) to your SEA+ supplier (InterAC or your local distributor).
- In return, a license file issued by InterAC, in accordance with your approved purchase order or approved testing period in writing, will be e-mailed to end-user by your SEA+ supplier (InterAC or your local distributor).

- 1. Insert the SEA+ CD into your CD-ROM drive or plug the SEA+ USB dongle into the USB port of your computer. In any case, follow step 2.**
- 2. Run the file 'Setup.exe' and follow the on-screen instructions (Figure 1, page 2).**
- 3. InterAC License Agreement is displayed; you must read it and accept it to start SEA+ installation.**

4. At the first installation, it is recommended to select all options except Sentinel System Driver.
5. Restart the PC.
6. Copy the license file issued by InterAC and provided by your supplier (InterAC or your local distributor) to the SEA+ install folder.
7. Node-locked SEA+ license is ready to run.

☞ To run SEA+ select: **Start -> Programs -> INTERAC -> SEA+ 20xx.x -> SEA+ 20xx.x.**

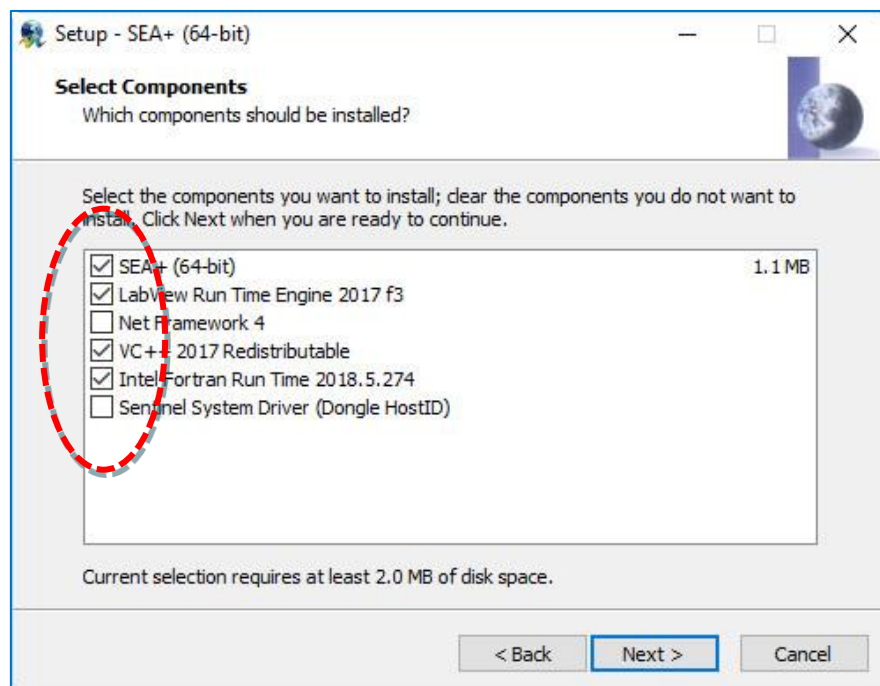


Figure 1: SEA+ Installation options (versions of third party software may be different from shown picture)

License File Based on Dongle (Security Device) Host-ID (Not for Testing Period)

The license is fixed to a specific rlm dongle host-ID Number and can be installed on any machine. This license grants usage rights to a single user who will operate on a single machine at the same time.

- The license file is based on a rlm dongle host-ID (security device)) owned by the end-user. If appropriate a dongle is sent with the SEA+ CD-ROM or with the SEA+ USB dongle or upon request from end-user if the need arises.
- The host-ID is normally written on the rlm dongle and has to contain 12 digits or letters (as example: AB-11-A1-16-C6-5D) and must be e-mailed to your SEA+ supplier (InterAC or your local distributor).
- A license file issued by InterAC, in accordance with your approved purchase order, will be e-mailed to end-user by your SEA+ supplier (InterAC or your local distributor).

- 1. Insert the SEA+ CD into your CD-ROM drive or plug the SEA+ USB dongle into the USB port of your computer. In any case, follow step 2.**
- 2. Run the file 'Setup.exe' and follow the on-screen instructions (Figure 1, page 2).**
- 3. InterAC License Agreement is displayed; you must read it and accept it to start SEA+ installation.**
- 4. At the first installation, it is recommended to select all options included Sentinel System Driver.**
- 5. Restart the PC.**
- 6. The dongle (security device) should be plugged into the USB port of the computer to allow licensed operation of the software.**
- 7. Copy the license file issued by InterAC and provided by your supplier (InterAC or local distributor) to the SEA+ install folder.**
- 8. Node-locked SEA+ license is ready to run.**

☞ To run SEA+ select: **Start -> Programs -> INTERAC -> SEA+ 20xx.x -> SEA+ 20xx.x.**

Installing & Licensing SEA+ Floating License

A floating license resides on a network server and be accessible to multiple users across the network. The number of purchased licenses control the number of users able to simultaneously access the Software. The licenses are counted and managed by a network server and limit access to the number of licenses purchased. The number of non-simultaneous users accessing the Software is not limited.

- The license file is based on a company server host-ID; this host-ID is generated through the "rlmhostid.exe" tool enclosed in the SEA+ CD-ROM or SEA+ USB dongle or downloaded with the software. "rlmhostid.exe" is started from DOS command window.
- The obtained host-ID has to contain 12 digits or letters (as example: AB-11-A1-16-C6-5D) and must be e-mailed to your SEA+ supplier (InterAC or your local distributor).
- In return a license file issued by InterAC, in accordance with your approved purchase order or approved testing period in writing, will be e-mailed to end-user by your SEA+ supplier (InterAC or your local distributor).

Server Installation

- Refer to RLM License Administration as pdf file enclosed in the SEA+ CD-ROM or SEA+ USB dongle that describes the installation and licensing procedures in order to install the license server (for further documentation refer to <http://www.reprisesoftware.com>).
- **Copy the license file issued by InterAC and provided by your supplier (InterAC or local distributor) to the server (contact your network company administrator if requested).**

End-User Installation

1. **Insert the SEA+ CD into end-user CD-ROM drive or plug SEA+ USB dongle into the USB port of your computer. In any case, follow step 2.**
2. **Run the file 'Setup.exe' and follow the on-screen instructions (Figure 1, page 2).**
3. **InterAC License Agreement is displayed; you must read it and accept it to start SEA+ installation.**
4. **At the first installation it is recommended to select all options except Sentinel System Driver.**
5. **Restart the PC.**
6. **Contact your network company administrator to install the license file that depends on your network properties (Refer to RLM License Administration as pdf file enclosed in the SEA+ CD-ROM or SEA+ USB dongle or downloaded with SEA+ that describes the installation and licensing procedures in order to install the license server).**
7. **Network floating SEA+ license is ready to run.**

☞ To run SEA+ select: **Start -> Programs -> INTERAC -> SEA+ 20xx.x -> SEA+ 20xx.x.**

Installing & Licensing Optional Modules

SEAVirt Module

SEAVirt Module is an **optional Module of SEA+** and installed on your computer when installing SEA+ software.

SEAVirt Module is dedicated to the analysis of NASTRAN output model files. SEAVirt generated models are extended to high frequency by SEA+ analytical functions.

SEAVirt answers a major question in SEA modeling: the subsystem partitioning. SEAVirt auto-detects subsystems from global FEM modes and uses the inverse SEA technique to identify all required SEA parameters.

Thanks to SEAVirt, modal density and wavenumber are identified from FEM models and provide the key parameters for predicting noise radiation from structures. All virtual SEA subsystems are fluently connected with analytical SEA subsystems.

SEAVirt is activated if "SEAVirt Module" is included in your license file issued by InterAC in accordance with your approved purchase order or approved testing period in writing.

SEA-Shock Module

SEA-Shock Module is an **optional Module of SEA+** and installed on your computer when installing SEA+ software.

SEA-Shock Module allows prediction of time history and **Shock Response Spectra** from computed SEA+ vibratory transfer functions and physical modeling of pyroshock sources.

SEA-Shock is activated if "SEA-Shock Module" is included in your license file issued by InterAC in accordance with your approved purchase order or approved testing period in writing.

SEA-Foam Module

SEA-Foam Module is an **optional Module of SEA+** and installed on your computer when installing SEA+ software.

With the SEA-Foam Module, **multilayered acoustic trims** are modeled in SEA+ to predict noise transmission.

SEA-Foam is activated if "SEA-Foam Module" is included in your license file issued by InterAC in accordance with your approved purchase order or approved testing period in writing.

SEA-Cyl Module

SEA-Cyl Module is an optional Module of SEA-Foam Module and installed on your computer when installing SEA+ software.

SEA-Cyl Module integrates AcouCYL™, a spectral method for the vibroacoustic modeling of multilayered cylindrical systems, developed and owned by CSTB in Grenoble, the French Technical Research Center of building industry.

SEA-Cyl is activated if "SEA-Cyl Module" is included in your license file issued by InterAC in accordance with your approved purchase order or approved testing period in writing.

Note: SEA-Cyl is an optional module of SEA-Foam meaning the user needs to be licensed with SEA+ Software and SEA-Foam Module before to be licensed for SEA-Cyl Module.

Uninstalling SEA+

- ☞ To uninstall the software, click **Add / Remove programs** in the control panel.
- ☞ Select **SEA+ x.x**, then suppress.
- ☞ The **LabVIEW Run-Time Engine x.x** can be suppressed in the same way while selecting **National Instruments Software**. **Other options** can be also removed.

Installing Update Version

After the first installation of SEA+, to install an update version of SEA+, return to § Installing and Licensing on first page.